

Installation Guide for



Navigation Video Interface

# RGB MBCIRC

designed for

## Mercedes-Benz

WITH and WITHOUT  
Navigation

**Made in USA**



Watch video of this installation at [www.youtube.com/navtool](http://www.youtube.com/navtool)

## RGB MBCIRC interface is compatible with:

Mercedes-Benz	B-CLASS	2003-2008
Mercedes-Benz	C-CLASS	2005-2007
Mercedes-Benz	CLK-CLASS	2005-2009
Mercedes-Benz	G-CLASS	2007-2008
Mercedes-Benz	GL-CLASS	2007-2008
Mercedes-Benz	M-CLASS	2006-2008
Mercedes-Benz	R-CLASS	2006-2008



The interface works on vehicles WITH and WITHOUT Navigation, if there is a screen installed.

### PLEASE NOTE:

### PLEASE READ THE ENTIRE GUIDE BEFORE STARTING

Featured installation requires skills of the car audio installer.

Professional help recommended.

If you choose to perform the featured installation you are doing it at your **OWN RISK**.

please visit

**[www.NavTool.com](http://www.NavTool.com)**

for additional info

# Step 1



## PREPARATION FOR THE INSTALLATION

In order to prepare the Mercedes radio for the installation, open the front cover by pressing EJECT button.

When the cover is open, disconnect the radio from power and turn the radio upside down.

Shown above is the radio prepared for installation.



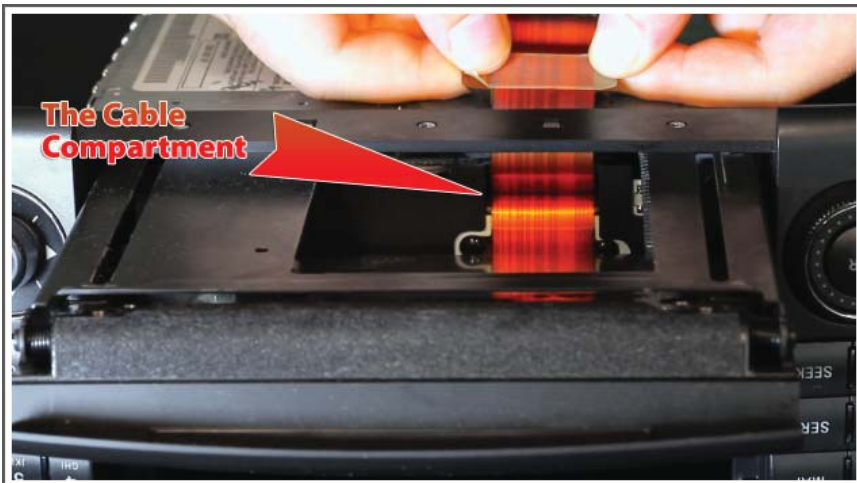
# Step 2

## DISCONNECTING THE ORIGINAL RIBBON CABLE

Carefully pull out original ribbon cable from its compartment, remove the **plastic cover (marked red)** and disconnect the cable from radio.

While disconnecting the cable, do not apply any force on the locks. They are very easy to break. Be careful, and do not use sharp objects to disconnect the cable.

## Step 3

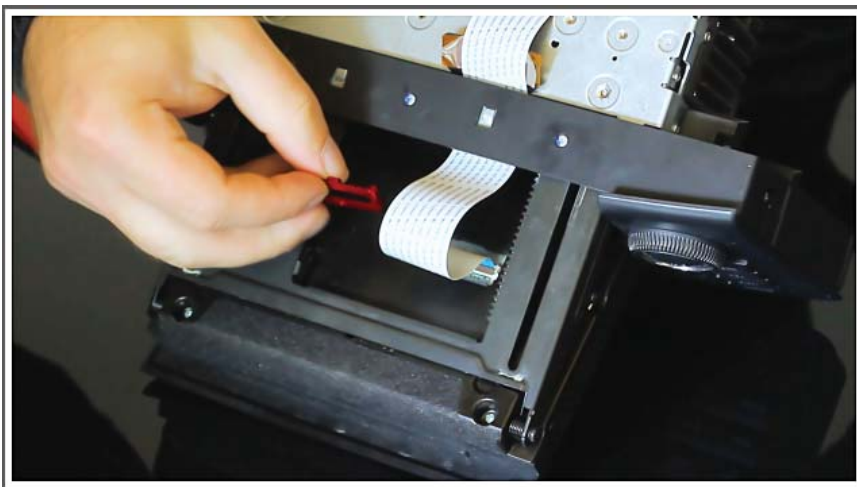


### PLACING CABLE BACK INTO THE COMPARTMENT

Put the disconnected ribbon cable back into the compartment including the plastic arrow shaped stopper on top of it, run the loose end through the slot on top.

Take precautions against piercing or scratching the cable.  
Do not use sharp objects for this operation.

## Step 4



### CONNECTING NAVTOOL RIBBON CABLE

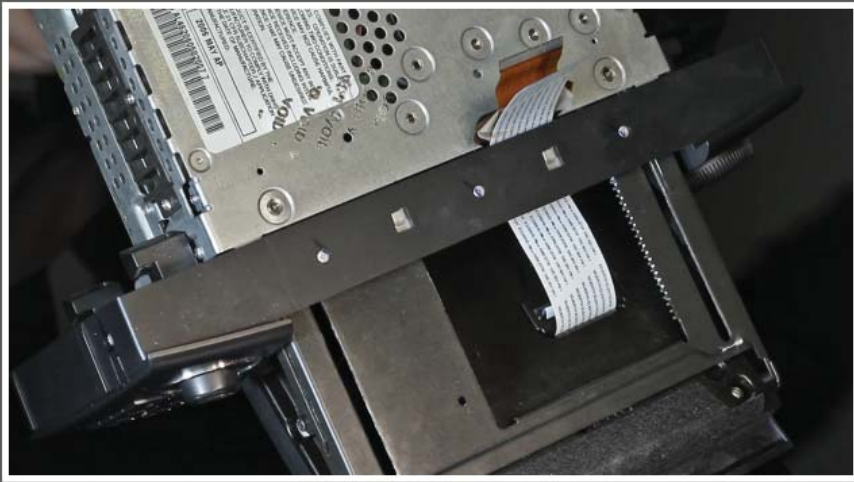
Run the NavTool ribbon cable through the same slot as for original cable.

Connect NavTool cable to the radio, and close the locks.

Carefully reinstall the **plastic cover (marked red)** .

Do not use sharp objects and do not apply force on the locks.

# Step 5



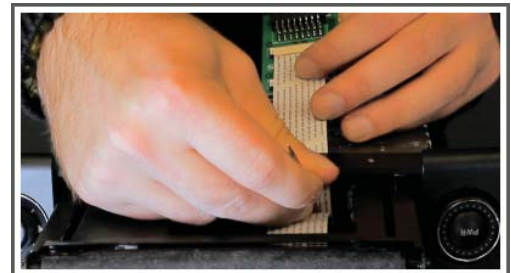
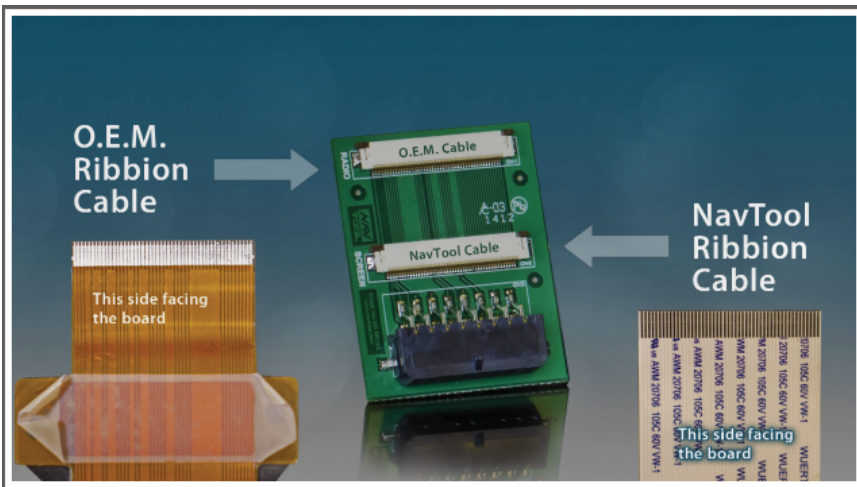
## SECURING NAVTOOL RIBBON CABLE

Place the NavTool ribbon cable into the compartment behind the slot, where the original cable is located.

Leave sufficient length of both NavTool and original cables for connecting them to NavTool board. Make sure there is at least 1.5" on both cables is loose.

Do not use sharp objects during the procedure.

# Step 6



## INSTALLING NAVTOOL BOARD

Connect the loose ends of ribbon cables to the board as shown.

Make sure to connect the plugs to the appropriate slot and to insert them in the right direction.

Place the excess of the ribbon cables in same compartment as original cable.

Make sure there is long enough stripe left for attaching the board to the radio.

# Step 7



## SECURING BOARD AND CLOSING RADIO

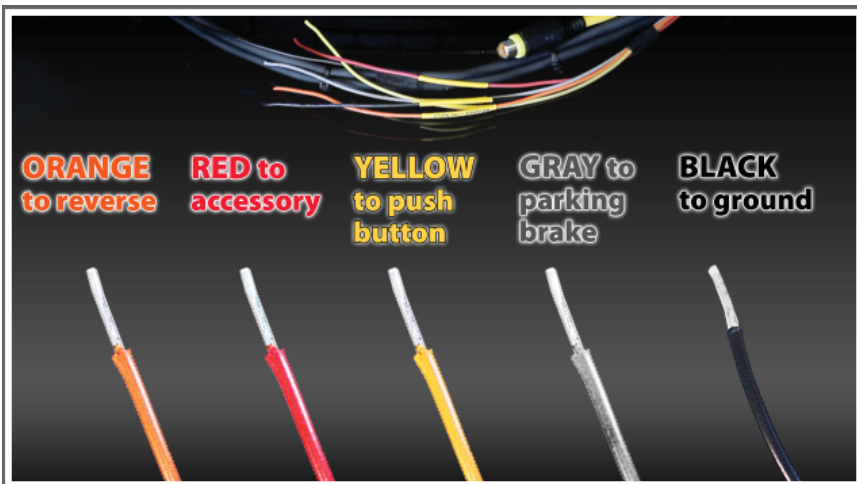
Remove the cover from adhesive tape on the back of the board and attach the board to the back of the radio in the location shown.

You may cover the board and the cables with duct tape, however it is an optional precaution.

Manually close the radio front panel. Don't force it, if the panel refuses to close – check if any of the cables preventing it from doing so.

# Step 8

When installing NavTool on Mercedes vehicles relay must be installed, please see below: Connect 85 of relay to ground, connect 86 of relay to reverse light, connect pin 30 of relay to accessory power, connect pin 87 of relay to Orange wire from NavTool Interface, you may also connect 87 of relay to accessory power for back up camera. If camera is desired to be viewed while vehicle is moving forward, connect cameras power wire to accessory power in the vehicle.



## CONNECTING WIRES

Connect the harness wires to the following wires of your vehicle:

ORANGE WIRE TO REVERSE      RED WIRE TO ACCESSORY      YELLOW WIRE TO PUSH BUTTON  
GRAY WIRE TO PARKING BREAK      BLACK WIRE TO GROUND

Make sure all wires connected properly.

**This step completes the installation. Now proceed to testing the operations.**

# Testing the Operation



**Push button** is connected to **Yellow** wire.  
To install **camera** - connect **Orange** wire to **reverse**.

**PLEASE NOTE:** Camera and DVD work only in **AUDIO MODE**

## TESTING BASIC RADIO FUNCTIONS

**It is recommended to test all the operations before completing the installation**

Check all the systems of your vehicle, connected to the radio, including:

**Speakers, Navigation and FM Radio**

## TESTING NAVTOOL OPERATION

Start by pressing **AUDIO** button

If camera installed, put the car in reverse to check its operation.  
To install camera, connect orange wire to reverse.

To check Camera in Motion press push button ones again.

To switch back to Navigation press and hold the push button for three seconds.

**If all functions responded correctly – your installation of NavTool RGB MBC-IRC designed for Mercedes-Benz vehicles was done correctly.**